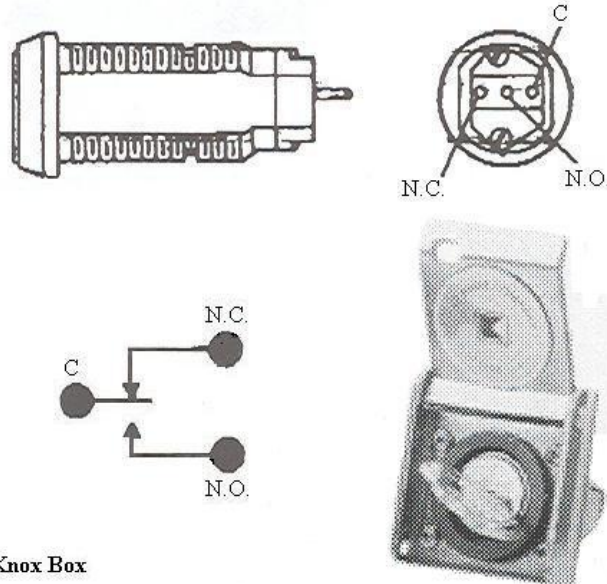


# 1000 Knox Box Wiring

To wire a Knox Box to the gate opener so the Fire Department can open your gate and hold it open, use 16 awg stranded, low voltage wire.



Knox Box

Connect the common terminal on the switch marked C to the common terminal on the circuit board marked GRN. Connect the normally open terminal on the switch marked N.O. to the terminal on the circuit board marked BLU. This way, whenever the Fire Dept. turns the key, the gate will open and remain open until they switch the key off.

