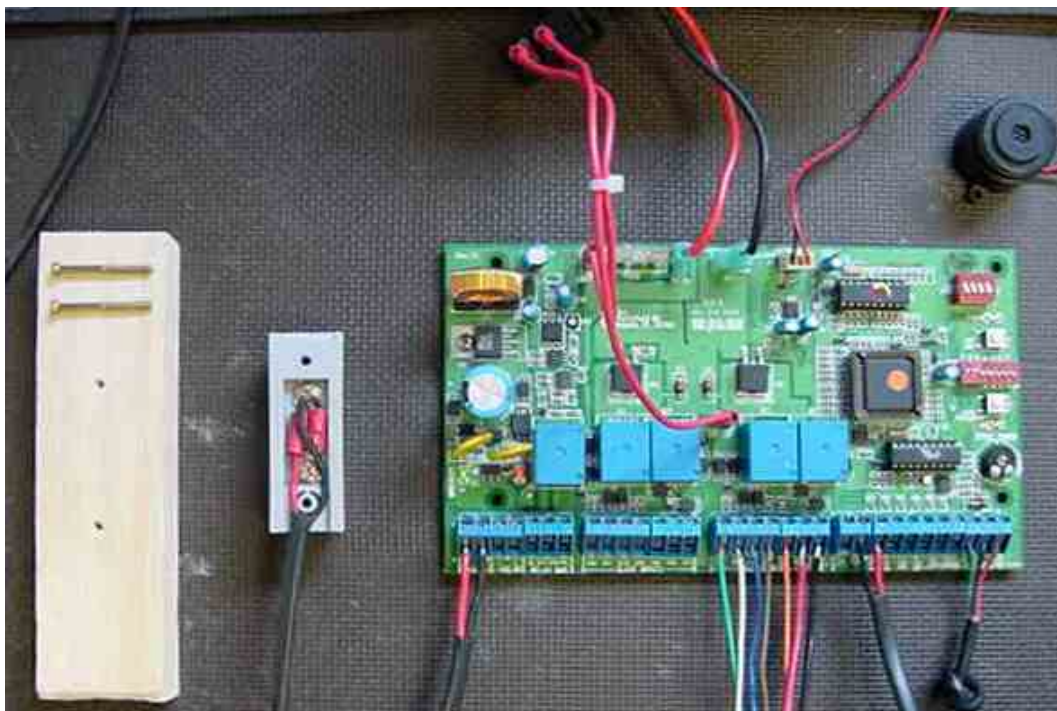
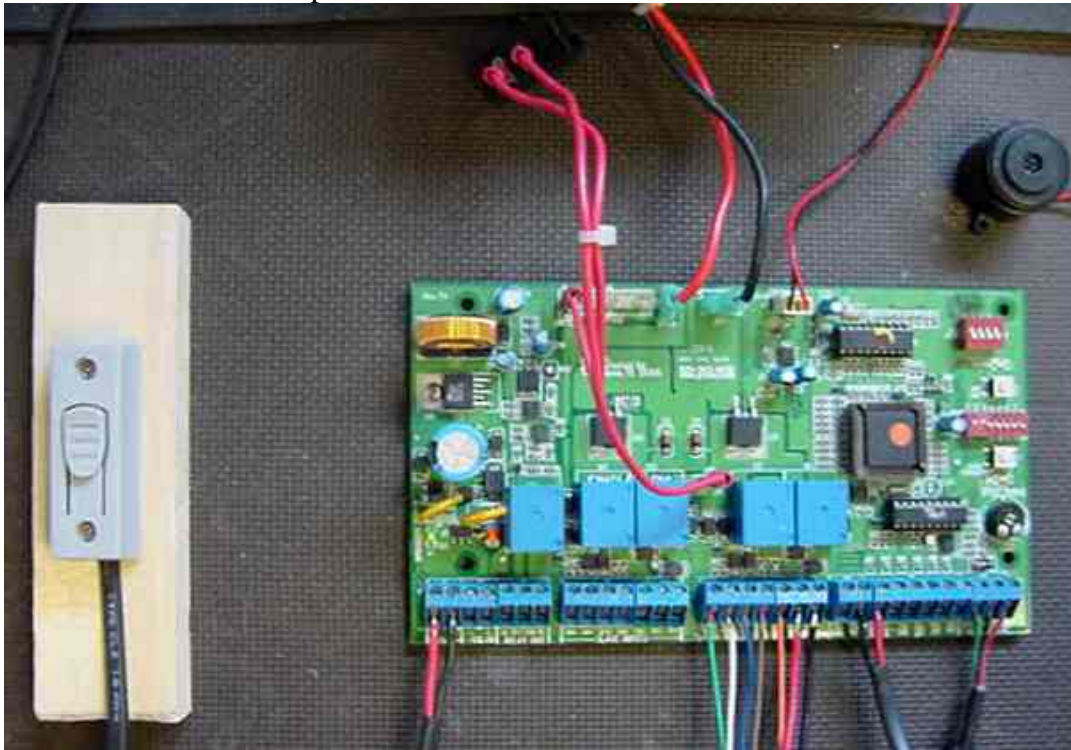
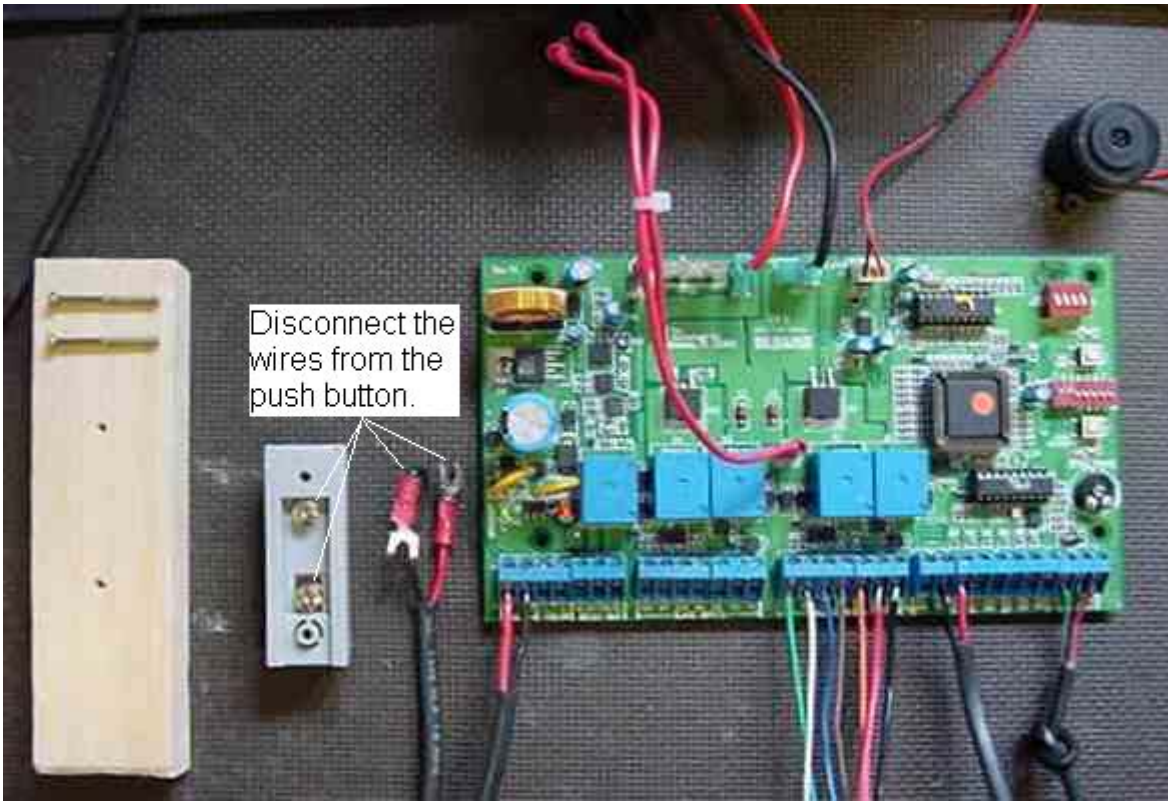


## 500 Push Button Test

If your gate opener will work with the remote transmitter, but not with a hard wired push button, try the follow troubleshooting steps.

Disconnect the wires from the push button.



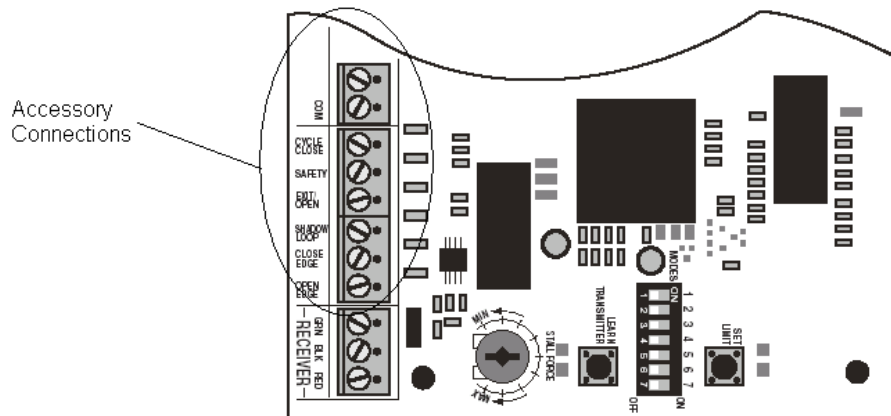


Brush the wires together momentarily for two seconds. It should activate the gate opener. If that works, but it will not work with the wires connected to the push button, you have a bad push/button.

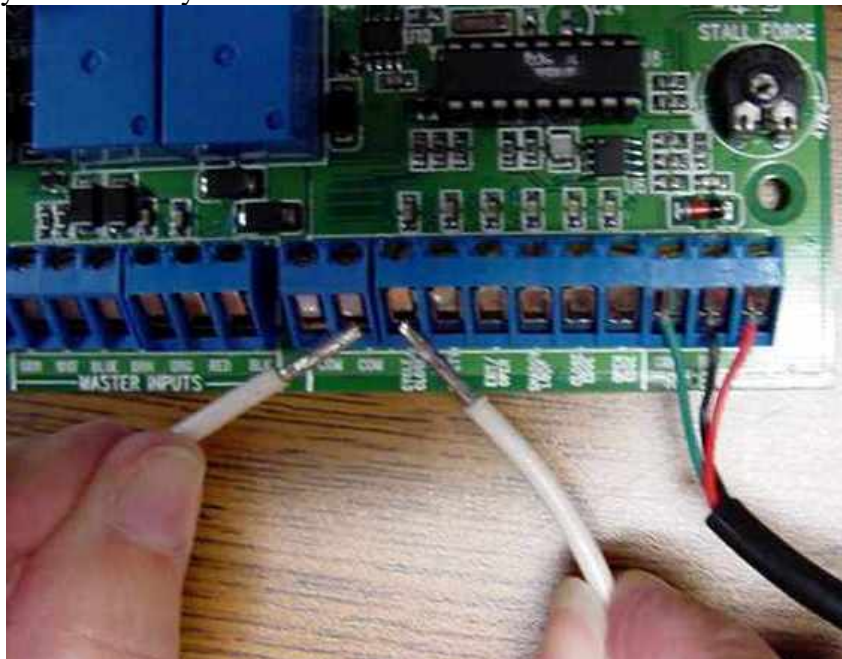


If it will not work by shorting the wires together, disconnect the wires from the circuit board and short the Cycle Close and Com terminals together momentarily for two seconds. It should activate the gate opener. Do this:

- 1) Locate the Com and Cycle Close on the accessory terminal block. These are screws where the wires for the accessories screw onto the circuit board. They are located in the lower left hand corner of the board.



- 2) Take a short piece of wire, hold one end on the Com terminal and brush the other end momentarily across the Cycle Close terminal.



If that works, but it will not work with the wires connected to the circuit board and brushing the wires together, the problem is the wire from the push button to the control board.

If shorting the Cycle Close and Com terminals together momentarily for two seconds does not work, but it does work with the remote transmitter, you have a problem with the circuit board.